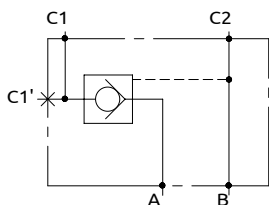
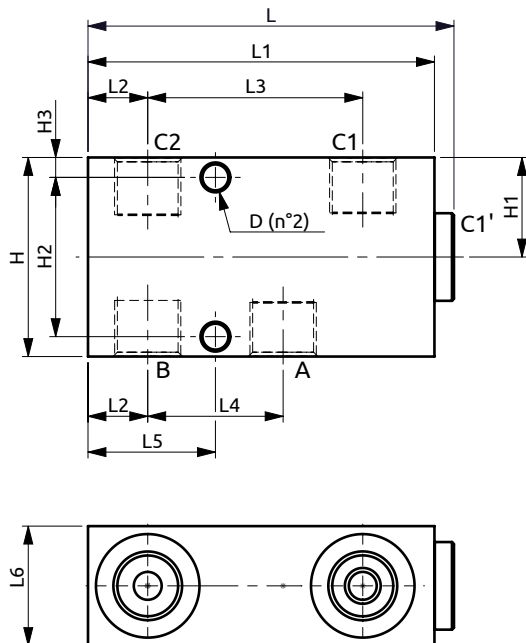
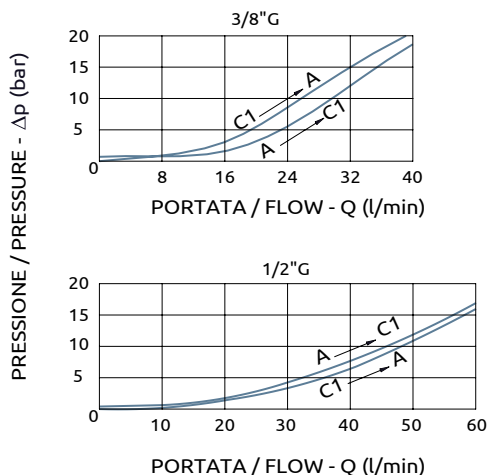




Valvola di blocco semplice effetto pilotata  
Single pilot operated check valve

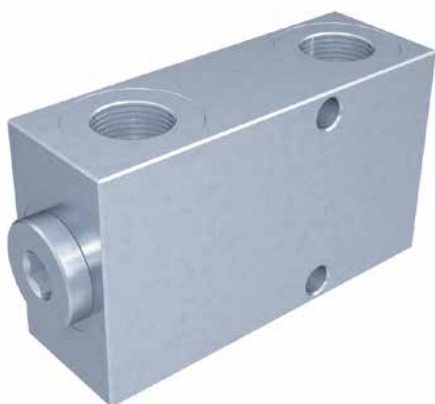


CURVE CARATTERISTICHE  
PERFORMANCE CURVES



Corpo in acciaio/Steel body

A050301.01.00	92	87	15	54	34	32	30	50	25	40	5	ø6.5
A050401.01.00	92	87	15	54	34	32	30	60	30	50	5	ø6.5
COD.	L	L1	L2	L3	L4	L5	L6	H	H1	H2	H3	D



DESCRIZIONE	DESCRIPTION
Permette il flusso libero da A verso C1. Idonea al sostentamento di un carico, non al controllo discesa.	The valve allows free flow from A to C1. Suitable to hold a load not to control a load lowering.

Codice Ordinazione	Rapporto di Pilotaggio	Portata Massima	Pressione Max	Dimensione Porte	Peso
Ordering Code	Pilot Ratio	Max Flow	Max Pressure	Port Size	Weight
A050301.01.00	4.7:1	40 l/min	400 bar	3/8" G	0.9 kg
A050401.01.00	5.2:1	60 l/min	400 bar	1/2" G	1 kg