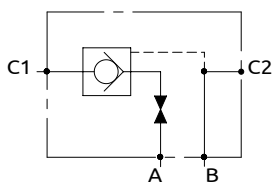


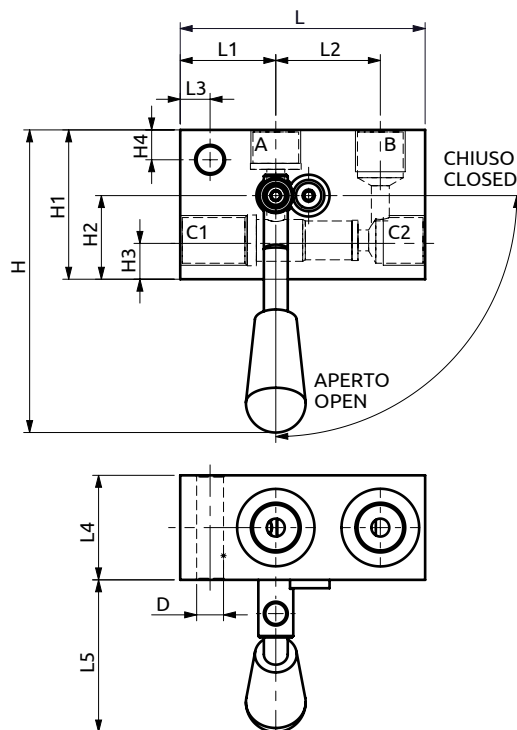
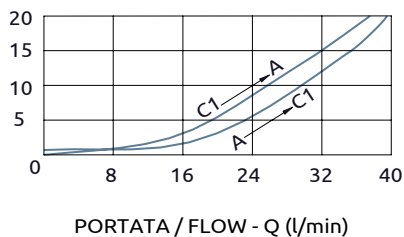


## Valvola di blocco semplice pilotata destra (con rubinetto) Single pilot operated check valve with manual shut-off right



PRESSIONE / PRESSURE -  $\Delta p$  (bar)

CURVE CARATTERISTICHE  
PERFORMANCE CURVES



Corpo in alluminio / Aluminium body

<b>B050304.05.00</b>	82	32	35	10	35	51	101	50	28	12	10	Ø9
<b>COD.</b>	L	L1	L2	L3	L4	L5	H	H1	H2	H3	H4	D



### DESCRIZIONE

Permette il flusso libero da A verso C1.  
Idonea al sostentamento di un carico, non al controllo discesa.

### DESCRIPTION

The valve allows free flow from A to C1. Suitable to hold a load not to control a load lowering.

Codice Ordine	Rapporto di Pilotaggio	Portata Massima	Pressione Max	Dimensione Porte	Peso
Ordering Code	Pilot Ratio	Max Flow	Max Pressure	Port Size	Weight
B050304.05.00	4.7:1	40 l/min	300 bar	3/8"G	0.4 kg