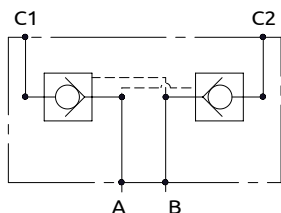


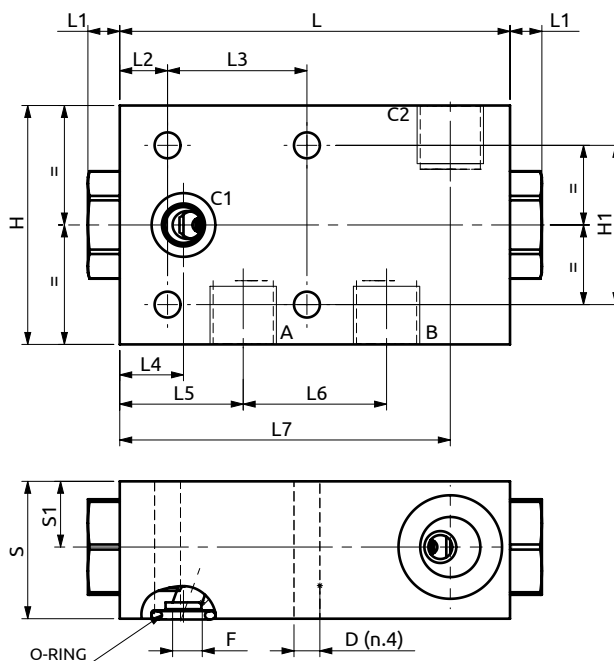
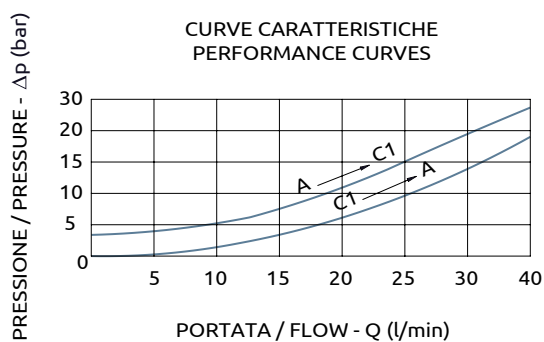


Valvola di blocco doppia pilotata flangiabile

Flangeable dual pilot operated check valve



CURVE CARATTERISTICHE
PERFORMANCE CURVES



Corpo in acciaio / Steel body

A050352.03.00	98	8	12	35	16	31	36	83	34.5	16.5	60	40	Ø7	Ø6.5	OR 3043 Ø10.77x2.62
COD.	L	L1	L2	L3	L4	L5	L6	L7	S	S1	H	H1	F	D	O-RING



DESCRIZIONE	DESCRIPTION
Valvola di blocco doppia flangiabile con otturatore a ventole avente apertura ON-OFF.	Flangeable dual check valve poppet type with ON-OFF opening.

Codice Ordine	Rapporto di Pilotaggio	Portata Massima	Pressione di inizio apertura	Pressione Max	Dimensione Porte	Peso
Ordering Code	Pilot Ratio	Max Flow	Cracking Pressure	Max Pressure	Port Size	Weight
A050352.03.00	7.1:1	40 l/min	3.5 bar	350 bar	3/8"G	1.4 kg