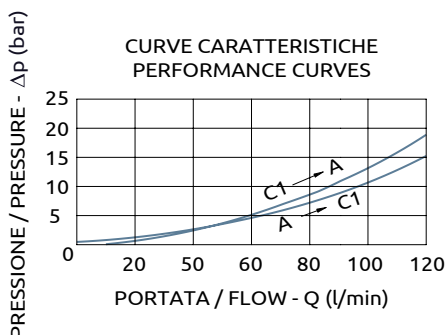
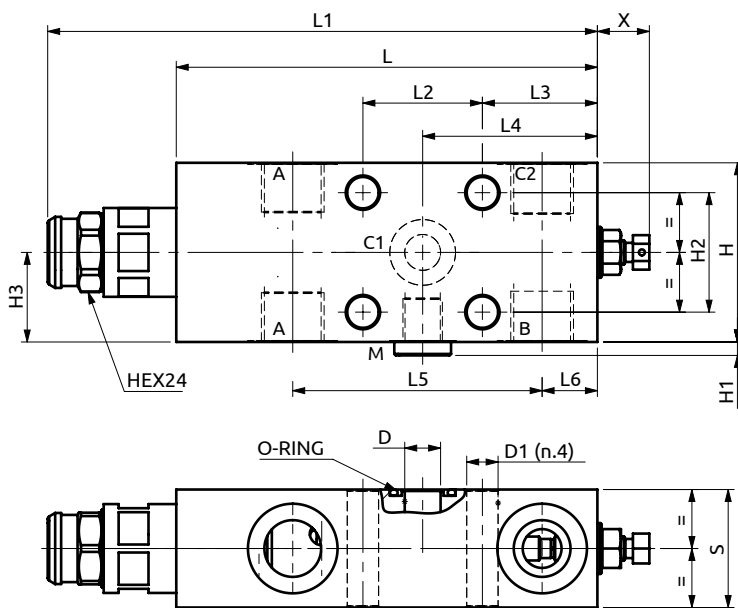
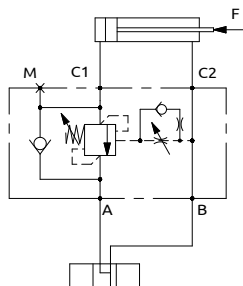




Valvola di bilanciamento semplice effetto, serie 210 flangiabile
Flangeable single overcenter valve "210 series"



Corpo in acciaio / Steel body

| | | | | | | | | | | | | | | | | | |
|----------------------|----------|-----------|-----------|-----------|-----------|-----------|-----------|----------|----------|-----------|-----------|-----------|----------|----------|-----------|---------------|-------------|
| A060471.14.00 | 141 | 184 | 40 | 38.5 | 58.5 | 83.5 | 18.5 | 39.5 | 60 | 4.5 | 40 | 30 | 20 max. | Ø12 | Ø10.5 | OR 3068 | Ø17.13x2.62 |
| A060471.15.00 | 141 | 184 | 40 | 38.5 | 58.5 | 83.5 | 18.5 | 39.5 | 60 | 4.5 | 40 | 30 | 20 max. | Ø12 | Ø10.5 | OR 3068 | Ø17.13x2.62 |
| COD. | L | L1 | L2 | L3 | L4 | L5 | L6 | S | H | H1 | H2 | H3 | X | D | D1 | O-RING | |



| DESCRIZIONE | DESCRIPTION |
|--|--|
| <p>Valvola di bilanciamento a semplice effetto, consigliata per distributori con spole a centro aperto in neutro. Collegare all'impianto come da schema. La valvola permette: flusso libero da A verso C1, sostentamento del carico con distributore in neutro o a pompa ferma, controllo del movimento di discesa del carico a seguito del pilotaggio della valvola pilotaggio, protezione da sovrappressioni nel cilindro.</p> | <p>Single overcenter valve, suggested for use with open centre spools. To be connected as shown. The valve allows: free flow from A to C1, to hold the load with spool in neutral position or with the pump not running, controlled movement when pilot pressure is applied, relief function against overpressure in the cylinder.</p> |

| CODICE ORDINAZIONE PIOMBATURA | SEALING ORDERING CODE |
|-------------------------------|-----------------------|
| 916013 | |

| Codice Ordinazione | Rapporto di Pilotaggio | Campo di Taratura | Taratura Standard | Incremento per giro | Portata Massima | Pressione Max | Dimensione Porte | Peso | |
|--------------------|------------------------|-------------------|-------------------|---------------------|-----------------|---------------|------------------|----------------|---------|
| Ordering Code | Pilot Ratio | Pressure Range | Standard Setting | Pressure Increase | Max Flow | Max Pressure | Port Size | Weight | |
| A060471.14.00 | 4:1 | 100-350 bar | 350 bar | 108 bar/turn | 120 l/min | 500 bar | A, B, C2 M | 1/2"G 1/4"G | 2.35 kg |
| A060471.15.00 | 8:1 | 150-350 bar | 350 bar | 82 bar/turn | 120 l/min | 500 bar | A, B, C2 M | 1/2"G 1/4"G | 2.35 kg |