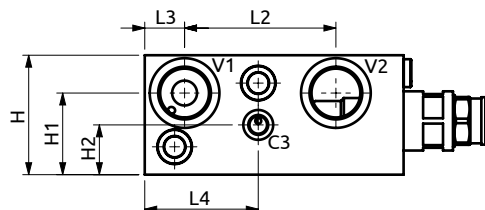
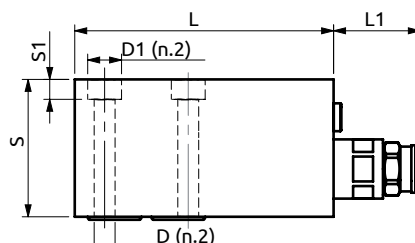
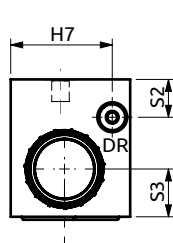
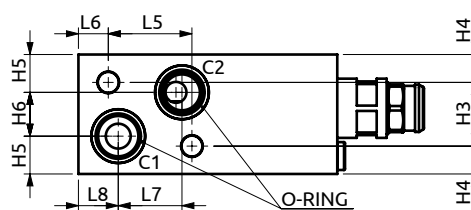
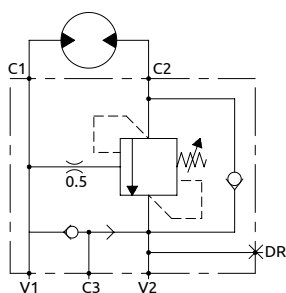




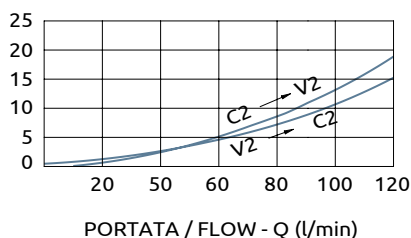
Valvola di bilanciamento semplice effetto, serie 210

Flangiabile flangeable single overcenter valve "210 series"



PRESSIONE / PRESSURE - Δp (bar)

CURVE CARATTERISTICHE
PERFORMANCE CURVES



Corpo in alluminio / Aluminium body

B060671.01.00	130	43.5	76	20	57	42	15	32	20	69	10	19	24	60	41	25	32	14	19	22	51	Ø10.5	Ø17	OR 3087	Ø22.22x2.62
COD.	L	L1	L2	L3	L4	L5	L6	L7	L8	S	S1	S2	S3	H	H1	H2	H3	H4	H5	H6	H7	D	D1	O-RING	



DESCRIZIONE

Valvola di blocco bilanciata semplice con flangiatura per motori idraulici DANFOSS OMS, OMSW, OMSS. Tramite un adattatore a piastra può essere fornita con flangiatura per motori OMT e OMR.

DESCRIPTION

Single flangeable overcenter valve for DANFOSS OMS, OMSW and OMSS machines. With an adapter plate it's available with flange for OMT and OMR motors.

CODICE ORDINAZIONE PIOMBATURA

SEALING ORDERING CODE

916013

Codice Ordinazione	Rapporto di Pilotaggio	Campo di Taratura	Taratura Standard	Incremento per Giro	Portata Massima	Pressione Max	Dimensione Porte		Peso
Ordering Code	Pilot Ratio	Pressure Range	Standard Setting	Pressure Increase	Max Flow	Max Pressure	Port Size		Weight
B060671.01.00	4:1	100-350 bar	350 bar	108 bar/turn	120 l/min	350 bar	V1,V2 C3,DR	3/4"G 1/8"G	1.55 kg