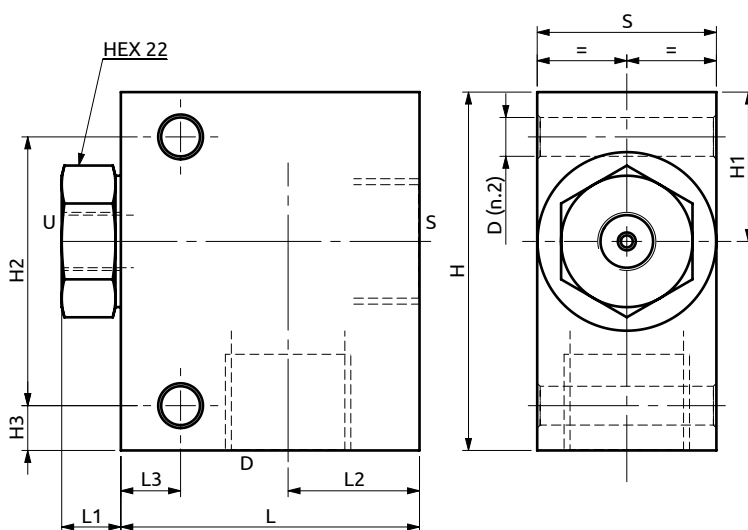
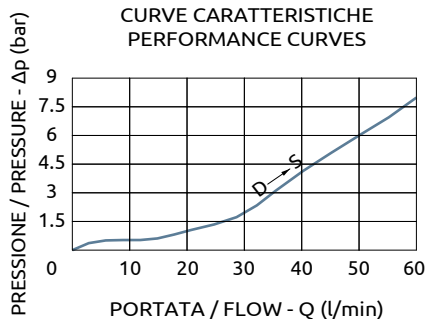
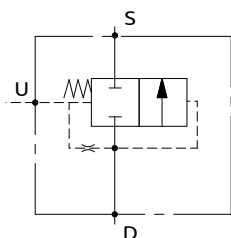




Valvola di messa a scarico per sistema d'emergenza

Unloading valve for emergency system

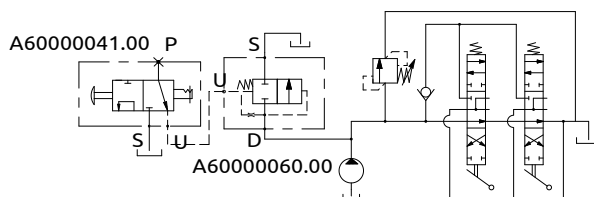


Corpo in acciaio / Steel body

50	10	22	10	30	60	25	45	7.5	Ø6,5
L	L1	L2	L3	S	H	H1	H2	H3	D



SCHEMA IDRAULICO CON VALVOLA DOPPIA
HYDRAULIC DIAGRAM WITH TWO VALVES



DESCRIZIONE

Valvola di messa a scarico normalmente chiusa con otturatore a cono pilotato.

DESCRIPTION

Pilot operated normally closed poppet type unloading valve.

Ordine di codice	Portata Massima	Pressione di Lavoro	Dimensione Porte		Peso
Ordering Code	Max Flow	Working Pressure	Port Size		Weight
A600000.60.00	60 l/min	350 bar	D, S	1/2" G	0.8 kg
			U	1/8" G	